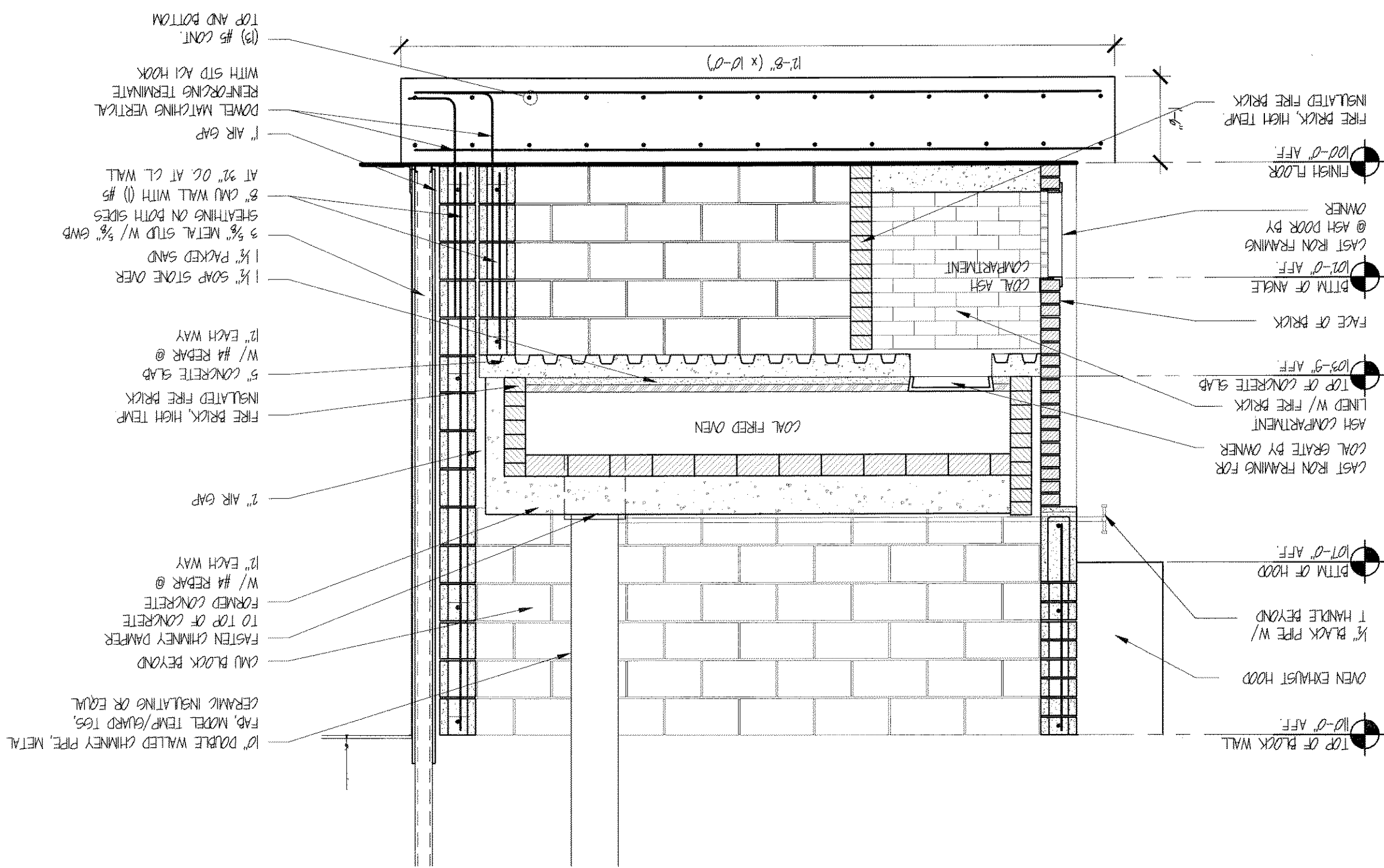


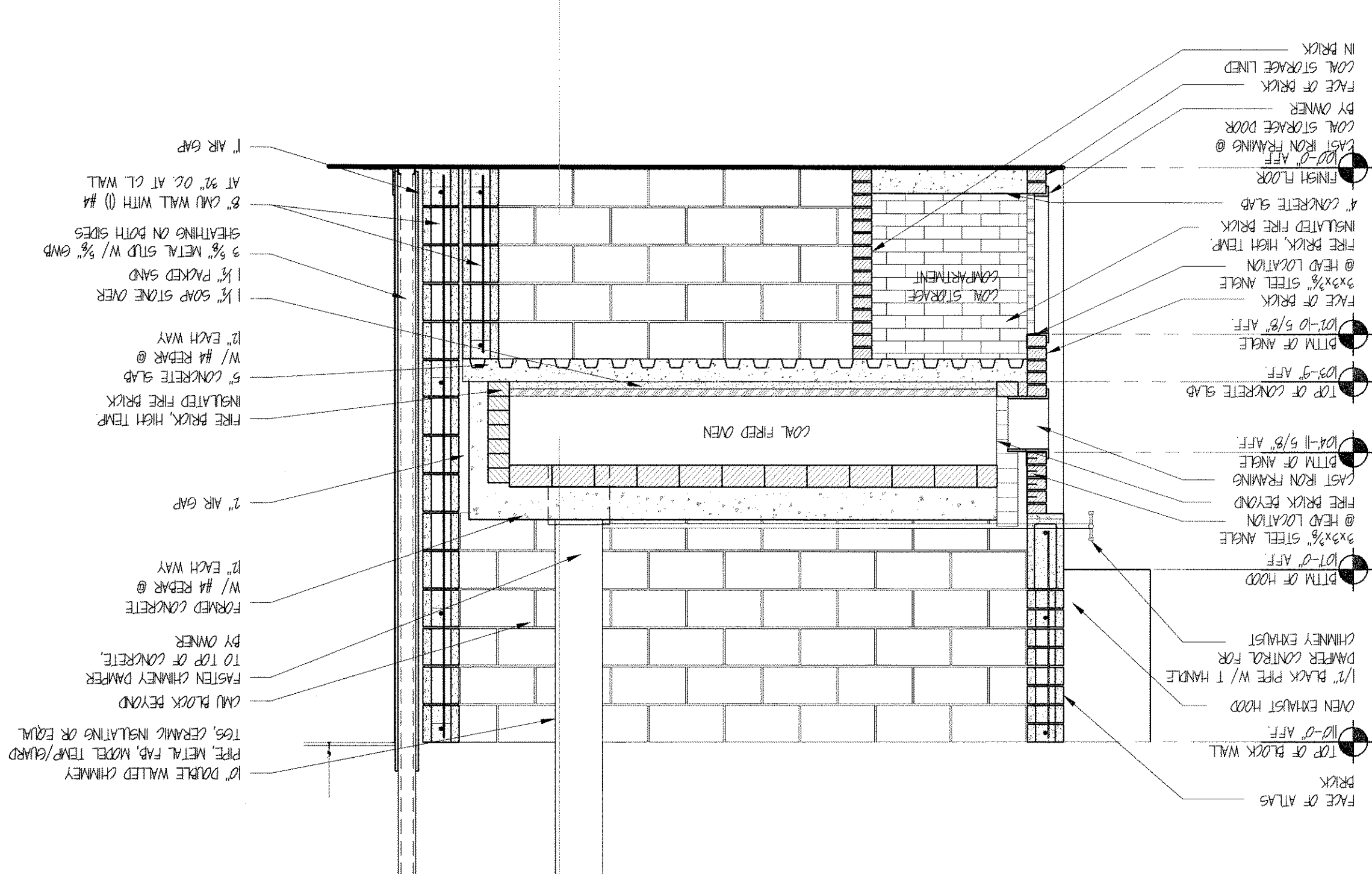
SECTION-PIZZA OVEN

SCALE 1/2" = 1'-0"



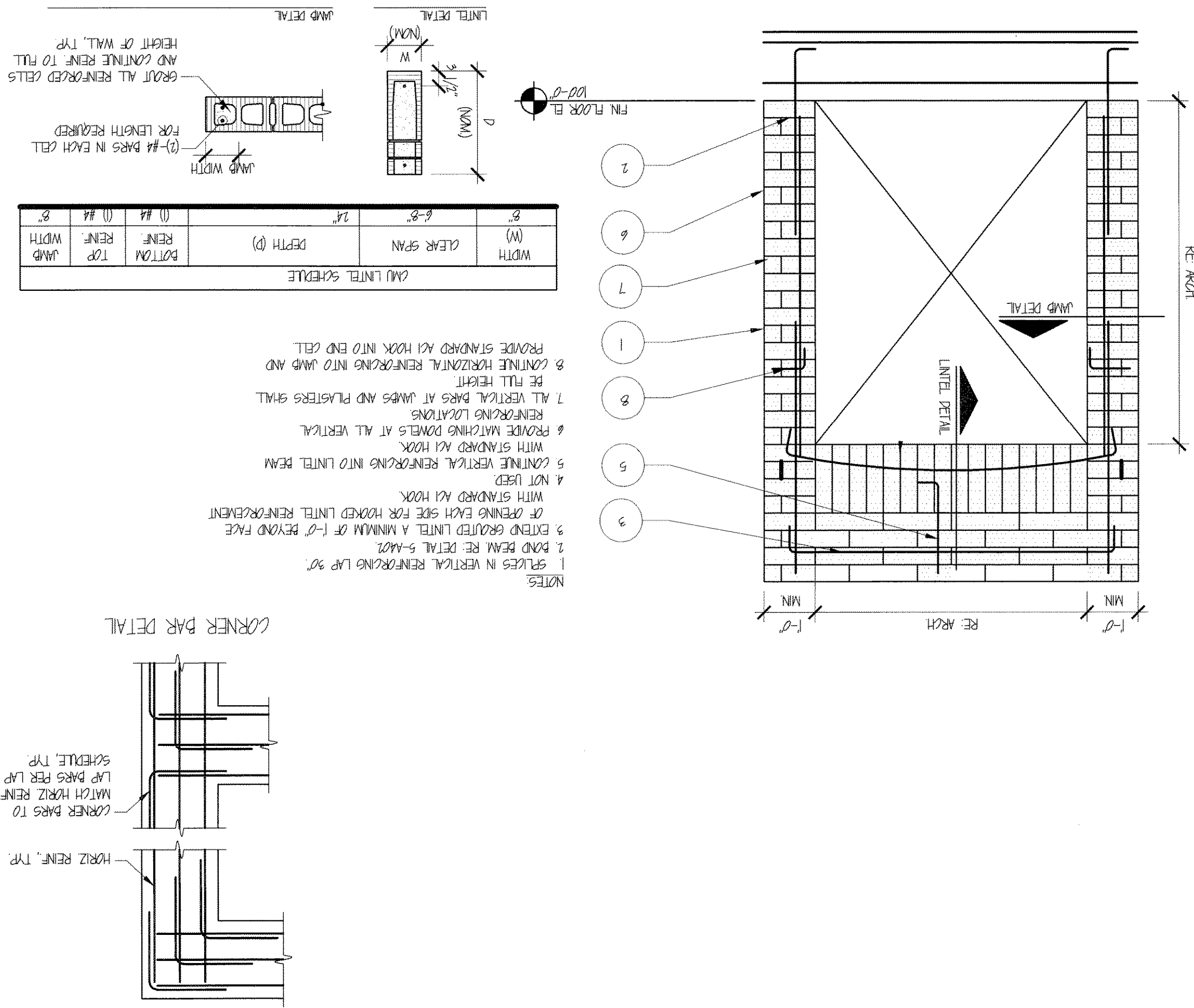
SECTION-PIZZA OVEN

SCALE 1/2" = 1'-0"



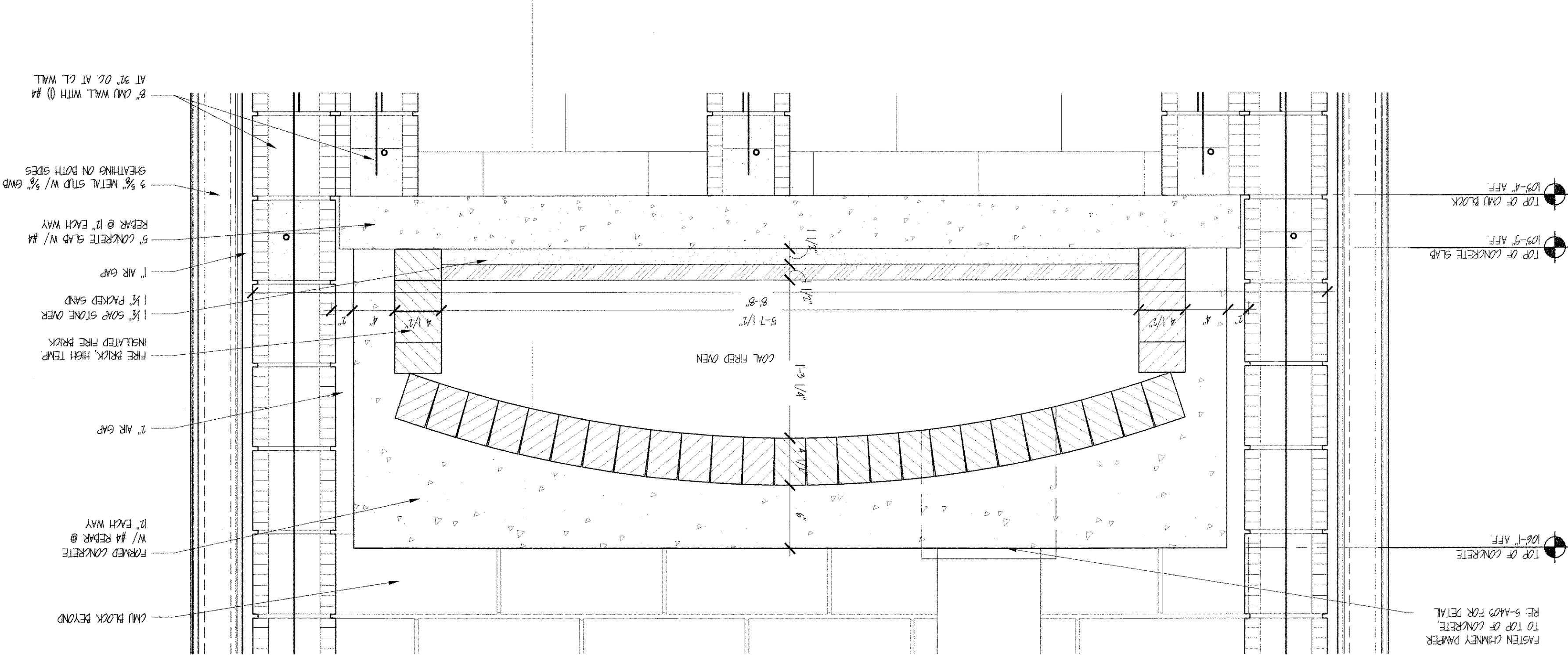
EXTERIOR CMU WALL OPENING

SCALE 1/2" = 1'-0"



ENLARGED SECTION-PIZZA OVEN

SCALE 1/2" = 1'-0"



A403

Sheet Title: OVEN SECTIONS AND DETAILS

Project: DOWNTOWN at the GARDENS
 Architect: Aaron M. King
 Date: 12/28/2010

No.	Description

This document, and the ideas and designs incorporated herein, are the property of Aaron M. King, and are not to be used, in whole or in part, for any other project without the written authorization of Aaron M. King.

DOCUMENTS FOR:
 DOWNTOWN at the GARDENS
 GRIMALDI'S PIZZERIA
 11701 LAKE VICTORIA GARDENS AVE., STE 3101
 PALM BEACH GARDENS, FL 33410

Aaron M. King
 Architect
 1221 N. Main Avenue
 Springfield, MO 65802
 Phone: (417) 896-0710
 Email: aking@armlink.com

GRIMALDI'S
 COAL BRICK OVEN PIZZERIA
 4000 N. Scottsdale Road, Suite 203
 Scottsdale, Arizona 85222
 Phone: 480.984.3147 Fax: 480.982.1282

Architect sealing the document:
 Aaron Marshall King

